



2001 W. Memorial Road

Oklahoma City, Oklahoma 73134

PROPERTY HIGHLIGHTS

- 1000' of Memorial Road Frontage
- Between Super Target Development and to be Constructed Main Event
- Located in Highly Active Retail/Quail Springs Mall Corridor with New Co-Tenants such as Cabelas & Top Golf

TOTAL ACRES 26.19 MOL

ZONING O-2

GENERAL USE Commercial

2012 TAXES \$6,029.10

www.naisullivangroup.com

NO WARRANTY OR REPRESENTATION, EXPRESS OR IMPLIED, IS MADE AS TO THE ACCURACY OF THE INFORMATION CONTAINED HEREIN, AND THE SAME IS SUBMITTED SUBJECT TO ERRORS, OMISSIONS, CHANGE OF PRICE, RENTAL OR OTHER CONDITIONS, PRIOR SALE, LEASE OR FINANCING, OR WITHDRAWAL WITHOUT NOTICE, AND OF ANY SPECIAL LISTING CONDITIONS IMPOSED BY OUR PRINCIPALS NO WARRANTIES OR REPRESENTATIONS ARE MADE AS TO THE CONDITION OF THE PROPERTY OR ANY HAZARDS CONTAINED THEREIN ARE ANY TO BE IMPLIED.

For more information:

David Hartnack

Sam Swanson

David's Cell: 1 405 761 8955

Sam's Cell: 1 405 208 2046

davidh@naisullivangroup.com

sam@naisullivangroup.com

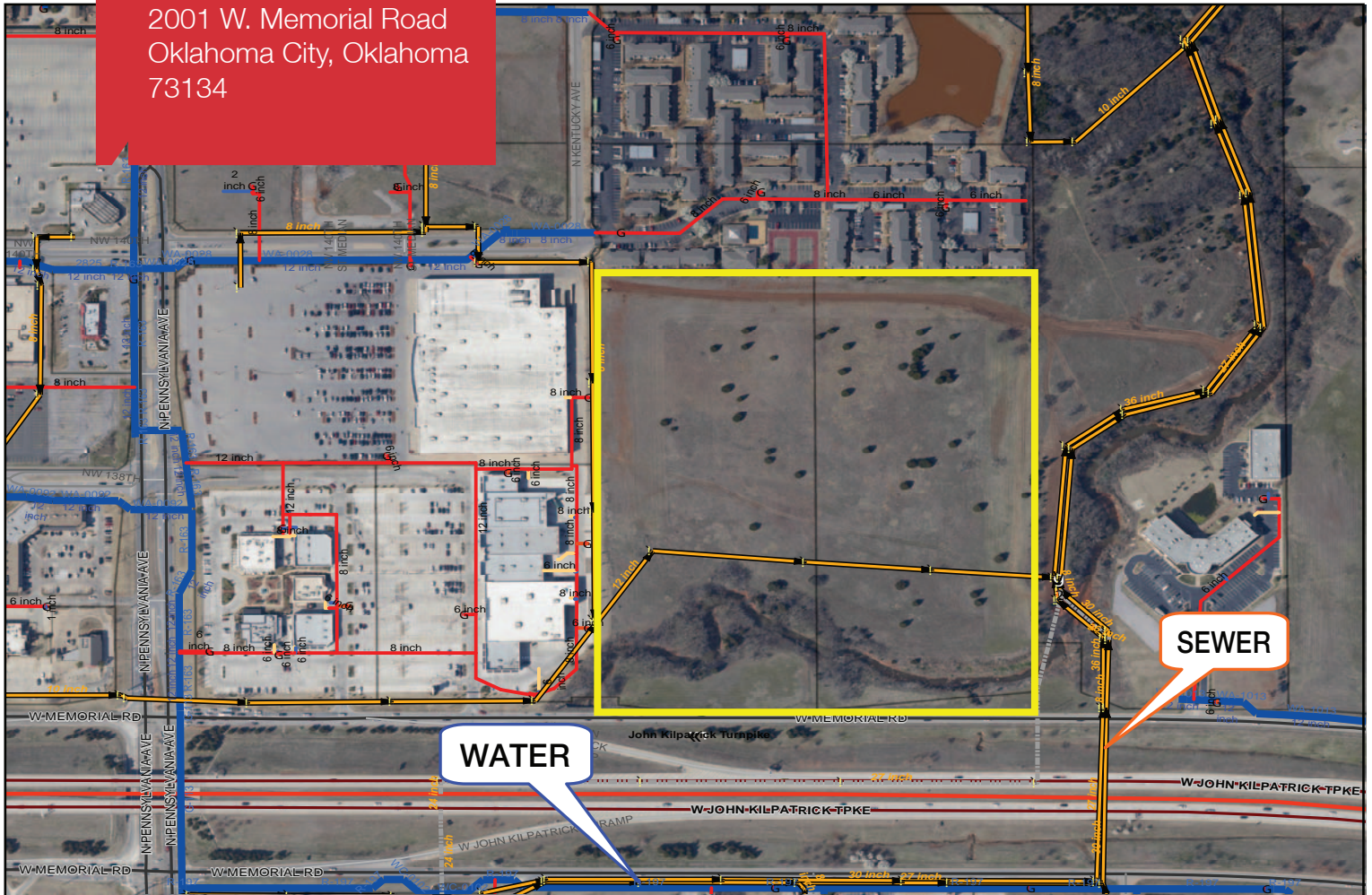
4045 N.W. 64th Street, Suite 340

Oklahoma City, Oklahoma 73116

Office: 1 405 840 0600

Fax: 1 405 840 0610

2001 W. Memorial Road
Oklahoma City, Oklahoma
73134



DEMOGRAPHICS

Population

1 Mile: 10,607	3 Mile: 70,318	5 Mile: 155,949
--------------------------	--------------------------	---------------------------

Average Household Income

1 Mile: \$45,042	3 Mile: \$74,818	5 Mile: \$78,897
----------------------------	----------------------------	----------------------------

Total Households

1 Mile: 5,708	3 Mile: 31,052	5 Mile: 66,784
-------------------------	--------------------------	--------------------------

LOCATION HIGHLIGHTS

- Frontage: 1,031' on Memorial Road
- Dimensions: 1,031' x 1,180'

For more information:

David Hartnack

Sam Swanson

David's Cell: 1 405 761 8955

Sam's Cell: 1 405 208 2046

davidh@naisullivangroup.com

sam@naisullivangroup.com

www.naisullivangroup.com

4045 N.W. 64th Street, Suite 340

Oklahoma City, Oklahoma 73116

Office: 1 405 840 0600

Fax: 1 405 840 0610

NAISullivan Group