



3410 S. 4th Street

Chickasha, Oklahoma 73018

PROPERTY HIGHLIGHTS

- Open Floor Plan
- 6 (+) Private Offices
- 4 Exam Rooms
- 2 Reception Areas
- 3 Restrooms (1 Shower)
- (1) Drive In Door
- Flex Space
- Geothermal in Part of the Building
- Firewall
- Private Sewer & Water Well
- 3 Phase Power



TOTAL SF	7,560 SF
TOTAL ACRES	1.63 ACRES
YEAR BUILT / RENOVATED	1988
ZONED	Commercial

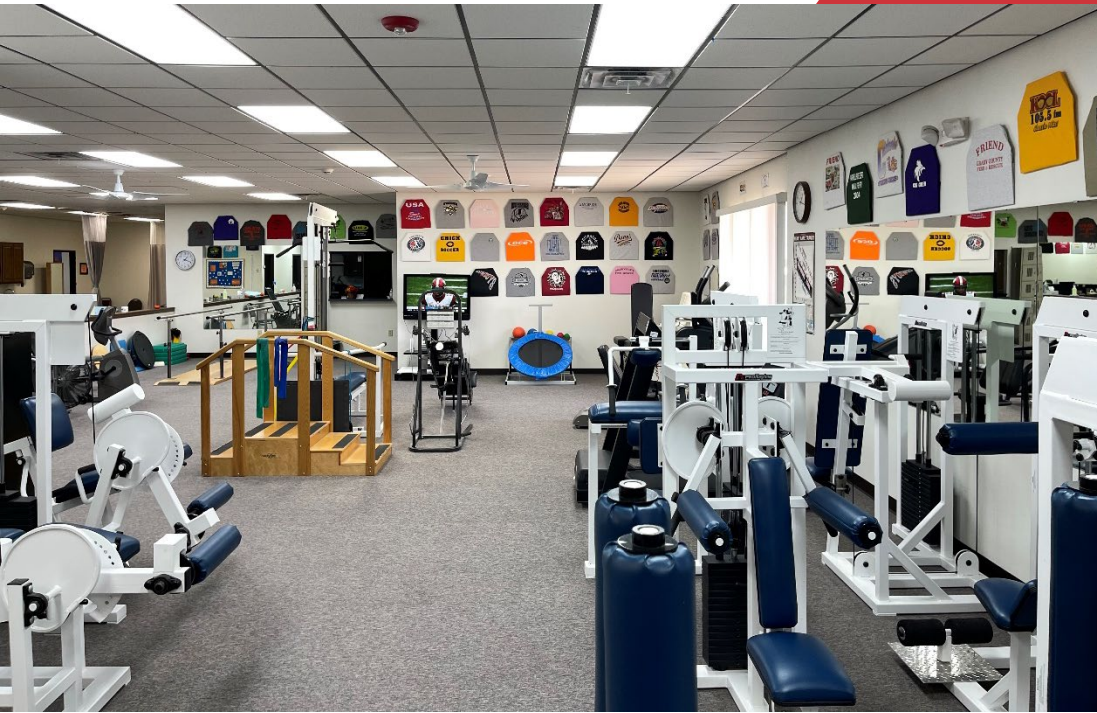
NO WARRANTY OR REPRESENTATION, EXPRESS OR IMPLIED, IS MADE AS TO THE ACCURACY OF THE INFORMATION CONTAINED HEREIN, AND THE SAME IS SUBMITTED SUBJECT TO ERRORS, OMISSIONS, CHANGE OF PRICE, RENTAL OR OTHER CONDITIONS, PRIOR SALE, LEASE OR FINANCING, OR WITHDRAWAL WITHOUT NOTICE, AND OF ANY SPECIAL LISTING CONDITIONS IMPOSED BY OUR PRINCIPALS NO WARRANTIES OR REPRESENTATIONS ARE MADE AS TO THE CONDITION OF THE PROPERTY OR ANY HAZARDS CONTAINED THEREIN ARE ANY TO BE IMPLIED.

Amanda Sullivan
+1 405 323 6423
amanda@naisullivangroup.com

4045 N.W. 64th Street, Suite 340
Oklahoma City, OK 73116
www.naisullivangroup.com

Matthew Pierce
+1 405 203 3636
matt@naisullivangroup.com

+1 405 840 0600 OFFICE
+1 405 840 0610 FAX



NO WARRANTY OR REPRESENTATION, EXPRESS OR IMPLIED, IS MADE AS TO THE ACCURACY OF THE INFORMATION CONTAINED HEREIN, AND THE SAME IS SUBMITTED SUBJECT TO ERRORS, OMISSIONS, CHANGE OF PRICE, RENTAL OR OTHER CONDITIONS, PRIOR SALE, LEASE OR FINANCING, OR WITHDRAWAL WITHOUT NOTICE, AND OF ANY SPECIAL LISTING CONDITIONS IMPOSED BY OUR PRINCIPALS. NO WARRANTIES OR REPRESENTATIONS ARE MADE AS TO THE CONDITION OF THE PROPERTY OR ANY HAZARDS CONTAINED THEREIN ARE ANY TO BE IMPLIED.

Amanda Sullivan
+1 405 323 6423
amanda@naisullivangroup.com

Matthew Pierce
+1 405 203 3636
matt@naisullivangroup.com

4045 N.W. 64th Street, Suite 340
Oklahoma City, OK 73116
www.naisullivangroup.com

+1 405 840 0600 OFFICE
+1 405 840 0610 FAX



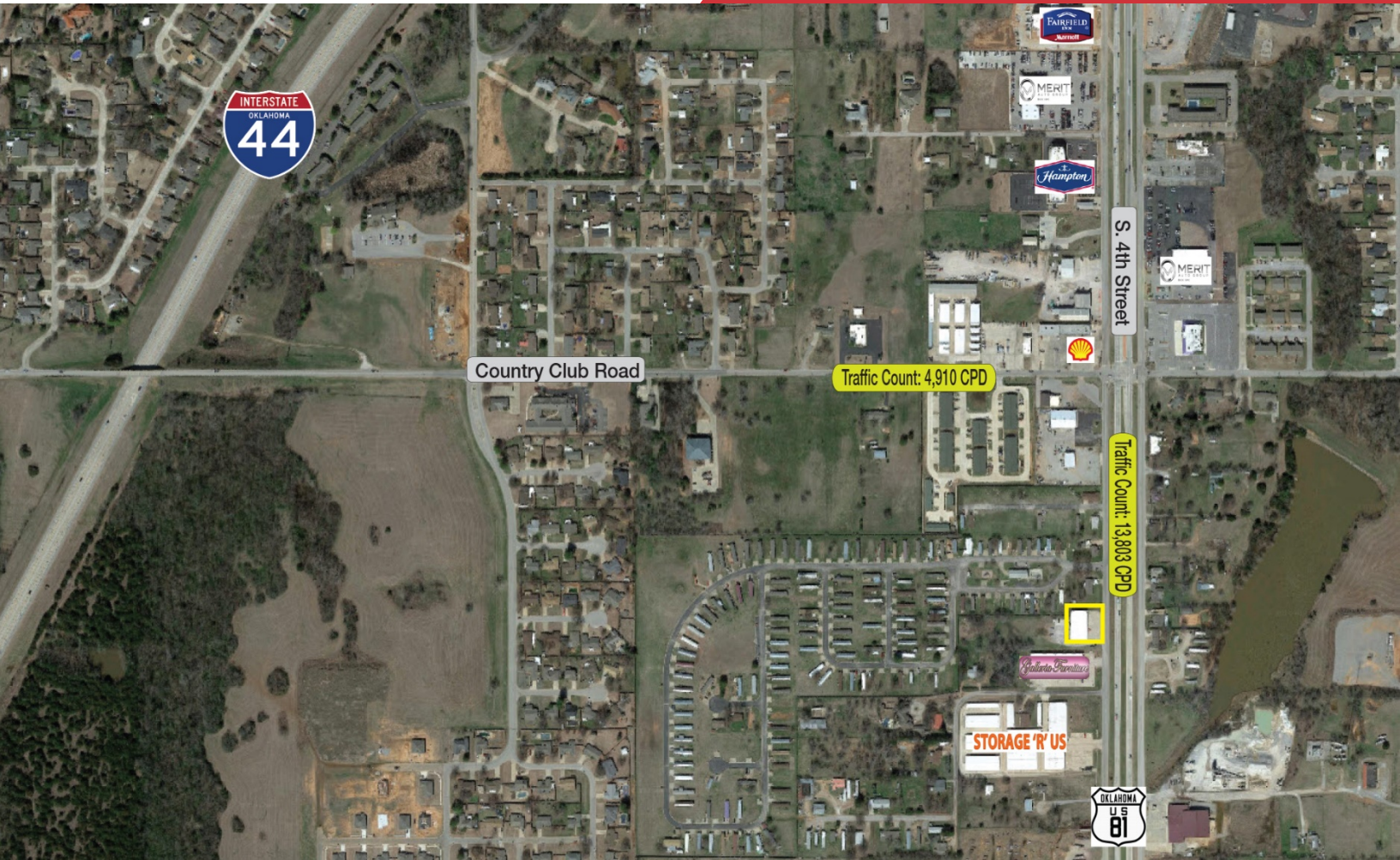
NO WARRANTY OR REPRESENTATION, EXPRESS OR IMPLIED, IS MADE AS TO THE ACCURACY OF THE INFORMATION CONTAINED HEREIN, AND THE SAME IS SUBMITTED SUBJECT TO ERRORS, OMISSIONS, CHANGE OF PRICE, RENTAL OR OTHER CONDITIONS, PRIOR SALE, LEASE OR FINANCING, OR WITHDRAWAL WITHOUT NOTICE, AND OF ANY SPECIAL LISTING CONDITIONS IMPOSED BY OUR PRINCIPALS NO WARRANTIES OR REPRESENTATIONS ARE MADE AS TO THE CONDITION OF THE PROPERTY OR ANY HAZARDS CONTAINED THEREIN ARE ANY TO BE IMPLIED.

Amanda Sullivan
+1 405 323 6423
amanda@naisullivangroup.com

4045 N.W. 64th Street, Suite 340
Oklahoma City, OK 73116
www.naisullivangroup.com

Matthew Pierce
+1 405 203 3636
matt@naisullivangroup.com

+1 405 840 0600 OFFICE
+1 405 840 0619 FAX



LOCATION HIGHLIGHTS

- Close Proximity to I-44
- Right Off Highway 81

Population	1 Mile: 2,836	3 Miles: 16,071	5 Miles: 20,233
Average Household Income	1 Mile: \$68,546	3 Miles: \$65,921	5 Miles: \$65,707
Total Households	1 Mile: 1,266	3 Miles: 6,383	5 Miles: 7,982

NO WARRANTY OR REPRESENTATION, EXPRESS OR IMPLIED, IS MADE AS TO THE ACCURACY OF THE INFORMATION CONTAINED HEREIN, AND THE SAME IS SUBMITTED SUBJECT TO ERRORS, OMISSIONS, CHANGE OF PRICE, RENTAL OR OTHER CONDITIONS, PRIOR SALE, LEASE OR FINANCING, OR WITHDRAWAL WITHOUT NOTICE, AND OF ANY SPECIAL LISTING CONDITIONS IMPOSED BY OUR PRINCIPALS NO WARRANTIES OR REPRESENTATIONS ARE MADE AS TO THE CONDITION OF THE PROPERTY OR ANY HAZARDS CONTAINED THEREIN ARE ANY TO BE IMPLIED.

Amanda Sullivan
+1 405 323 6423
amanda@naisullivangroup.com

4045 N.W. 64th Street, Suite 340
Oklahoma City, OK 73116
www.naisullivangroup.com

Matthew Pierce
+1 405 203 3636
matt@naisullivangroup.com

+1 405 840 0600 OFFICE
+1 405 840 0610 FAX